



FULLY FUNCTIONAL SECURED BANKING SOLUTION

PFI v2 is designed to help financial institutions to submit credit information to CCRIS and to promote one stop customer credit exposure.

Our experience shows that having a team that has actual implementation experience in delivering PFI Interface Software v2 is best placed to provide realistic and achievable results.

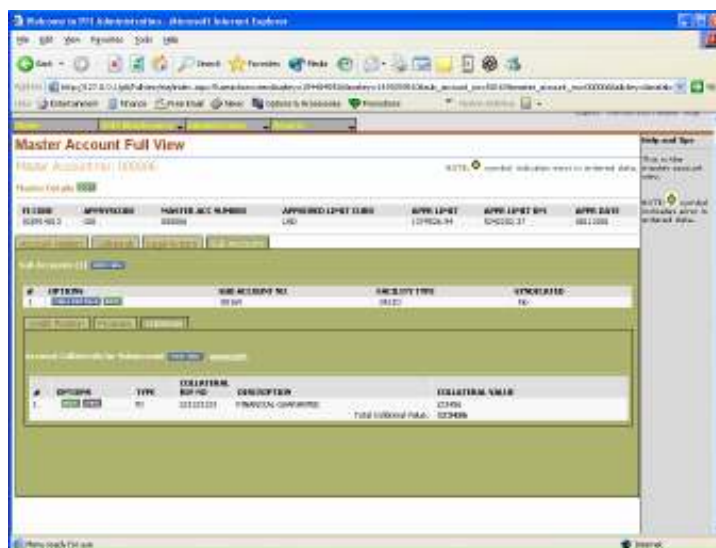
Features:

- Processes can be prioritized and adjusted to process much faster
- Conversion process can be simplified and flexible to accommodate conversion changes and complexity through the use of a script-based processing.
- Flexibility to create relationship searches for queries on the SDIS data within PFI database and can be captured in to other formats (e.g. Excel, Text Files).
- Provides a processing mechanism to merge PFI data from two or more PFI credit systems due to the business merger requirement.
- Provides a means of control in the administration of the data by dividing the users into two levels.

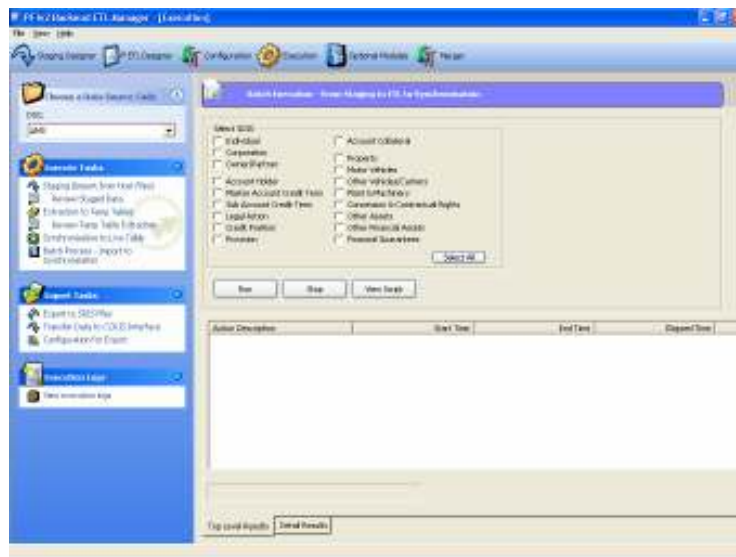
PFI Interface Software

PFI Interface Software Version 2.0 ("PFI v2") is the latest development by Trisilco-IT for the Participating Financial Institution (PFI)'s credit information submission in the Central Credit Reference Information System (CCRIS)'s Standard Data Input Specification (SDIS) to the Central Bank of Malaysia (BNM).

Access PFI v2 quickly and easily through web based intuitive interface. Manage all related activities and information from within one screen



Maintain a complete, detailed view for every master account, including sub-account information such as the Credit Position, Provisions and Collateral.



Processes can be controlled, prioritized and adjusted to process